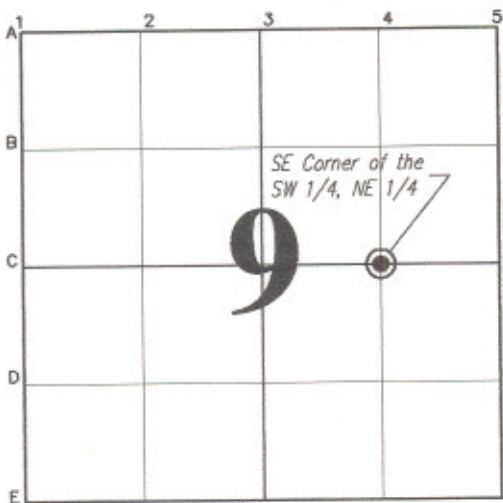


INDEX TO LANDMARKS

The Daviess County Recorder's Office  
For the Daviess County, Indiana, Commissioners

Section: 9 Township 5 North, Range 6 West

Civil Township: Elmore

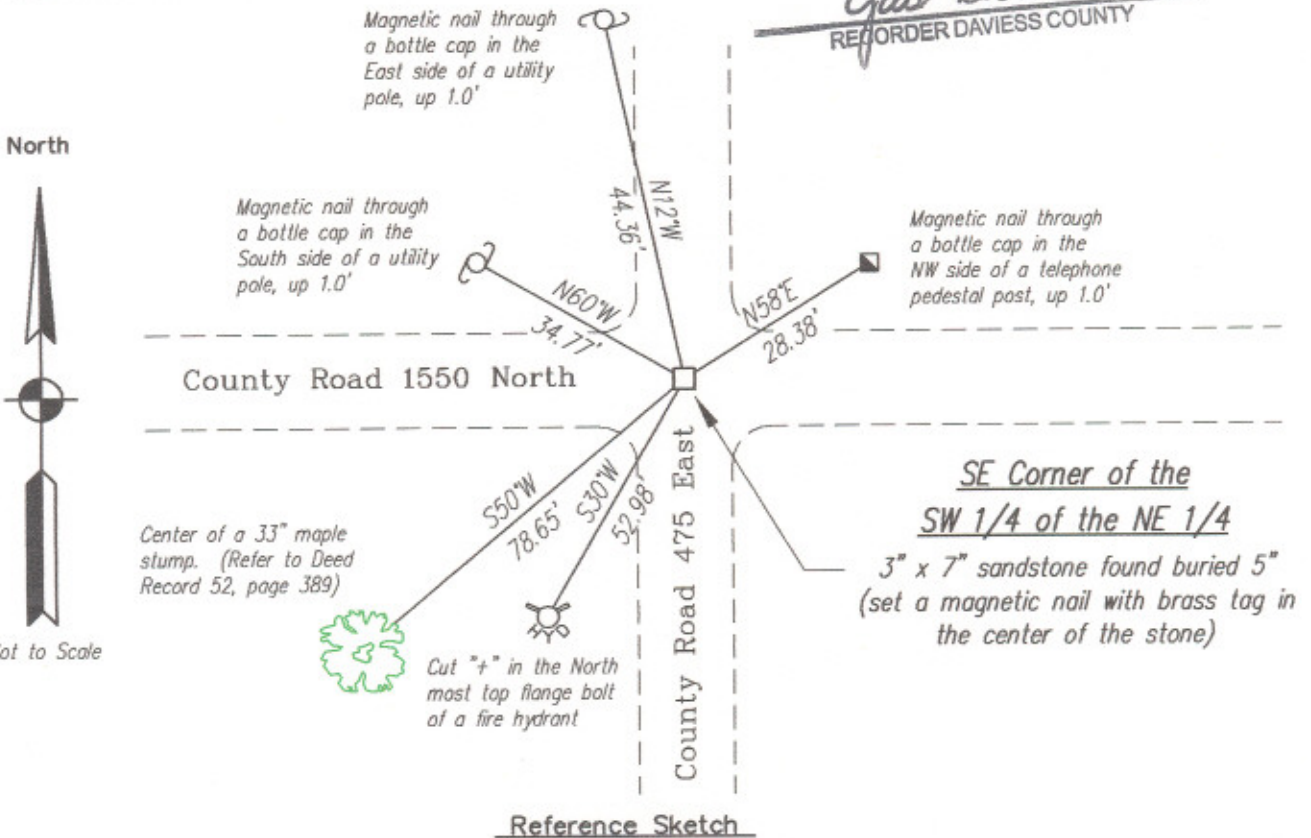


Remarks

The corner is a 3" x 7" sandstone found buried 5". The origin of the stone is unknown. It is a record monument in Deed Record 52, page 389 in the Daviess County Recorder's office. Refer to the plat of survey filed in Instrument No. 03-4922 in the Daviess County Recorder's office.

INST. NO. 04-0252  
RECEIVED FOR RECORD  
This 14 day of Jan 2004  
at 11:23 Fee NIC

*Gail Doodes*  
RECORDER DAVIESS COUNTY



Referenced By: Darren L. Helms and Phillip S. Gabhart

Prepared By:

Signature: *Darren L. Helms*

Printed name: Darren L. Helms

Indiana Land Surveyor Registration Number: 29600022

Date: AUGUST 6, 2003



seal