

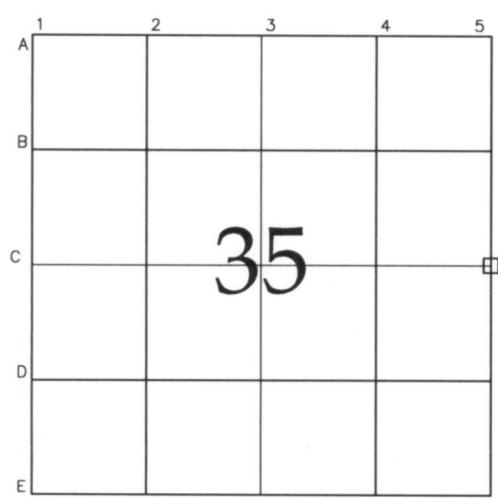


INDEX TO LANDMARKS

The Daviess County Recorder's Office
 For the Daviess County, Indiana, Commissioners

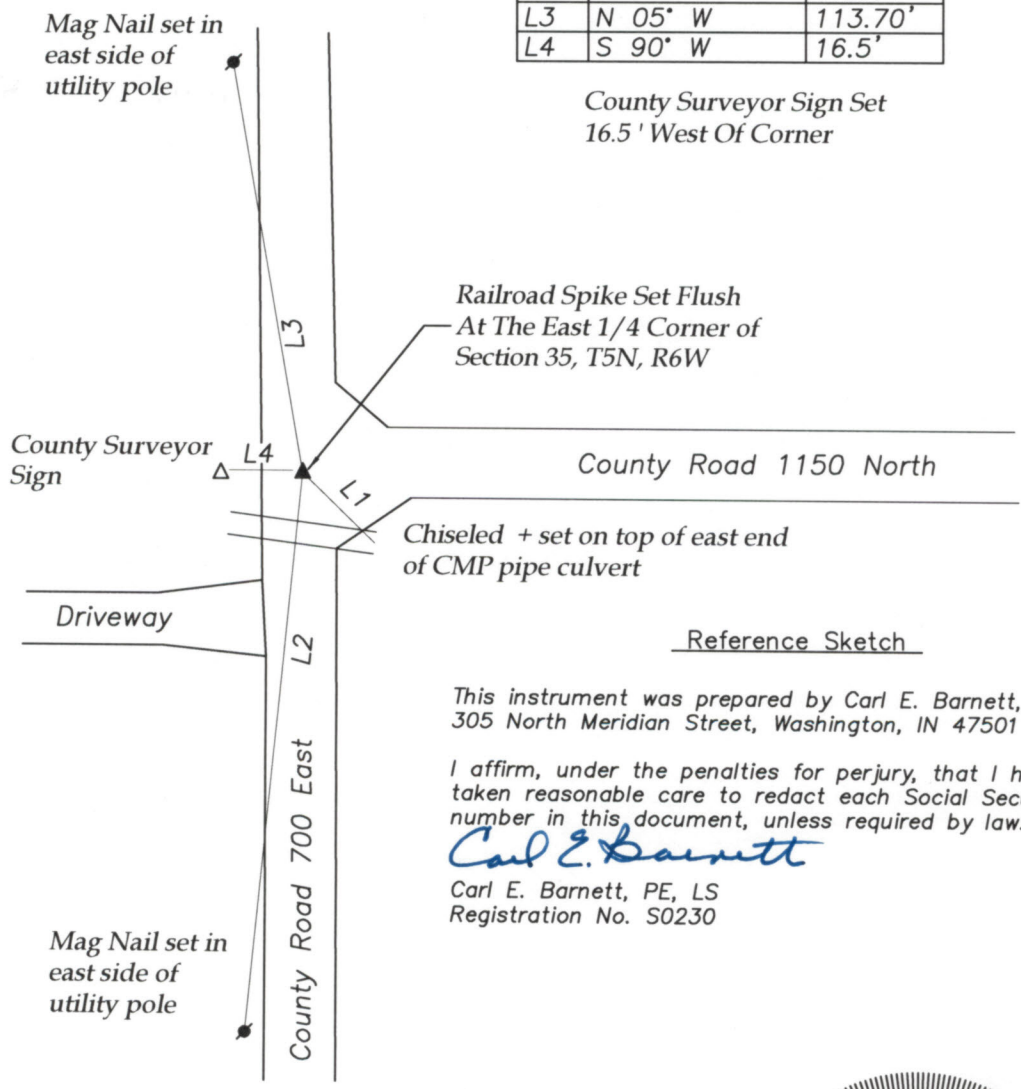
Section: 35 Township 5 North, Range 6 West

Civil Township: Elmore



Remarks
 The corner is a railroad spike set flush in place of a Mag Nail found buried 1". This monument was recovered during a survey performed by me on September 5, 2018 and recorded as Instrument NO. 18-3478.
 East 1/4 Corner

LINE	BEARING	DISTANCE
L1	S 40° E	27.49'
L2	S 10° W	172.91'
L3	N 05° W	113.70'
L4	S 90° W	16.5'



Reference Sketch

This instrument was prepared by Carl E. Barnett, PE, LS, 305 North Meridian Street, Washington, IN 47501

I affirm, under the penalties for perjury, that I have taken reasonable care to redact each Social Security number in this document, unless required by law.

Carl E. Barnett

Carl E. Barnett, PE, LS
 Registration No. S0230

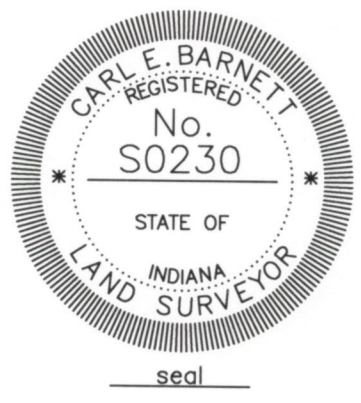
Prepared By:

Signature: Carl E. Barnett

Printed name: Carl E. Barnett

Indiana Land Surveyor Registration Number: S0230

Date: January 5, 2019



seal