

191150 SURV \$0.00
 03/29/2019 09:23:41A 1 PGS
 Jamie K. Chapman
 Daviess County County Recorder IN
 Recorded as Presented

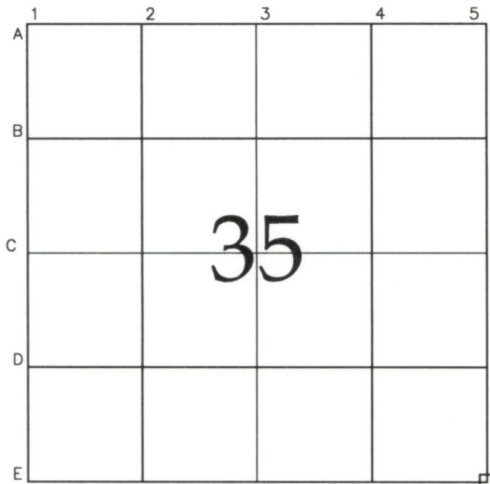


INDEX TO LANDMARKS

The Daviess County Recorder's Office
 For the Daviess County, Indiana, Commissioners

Section: 35 Township 5 North, Range 6 West

Civil Township: Elmore



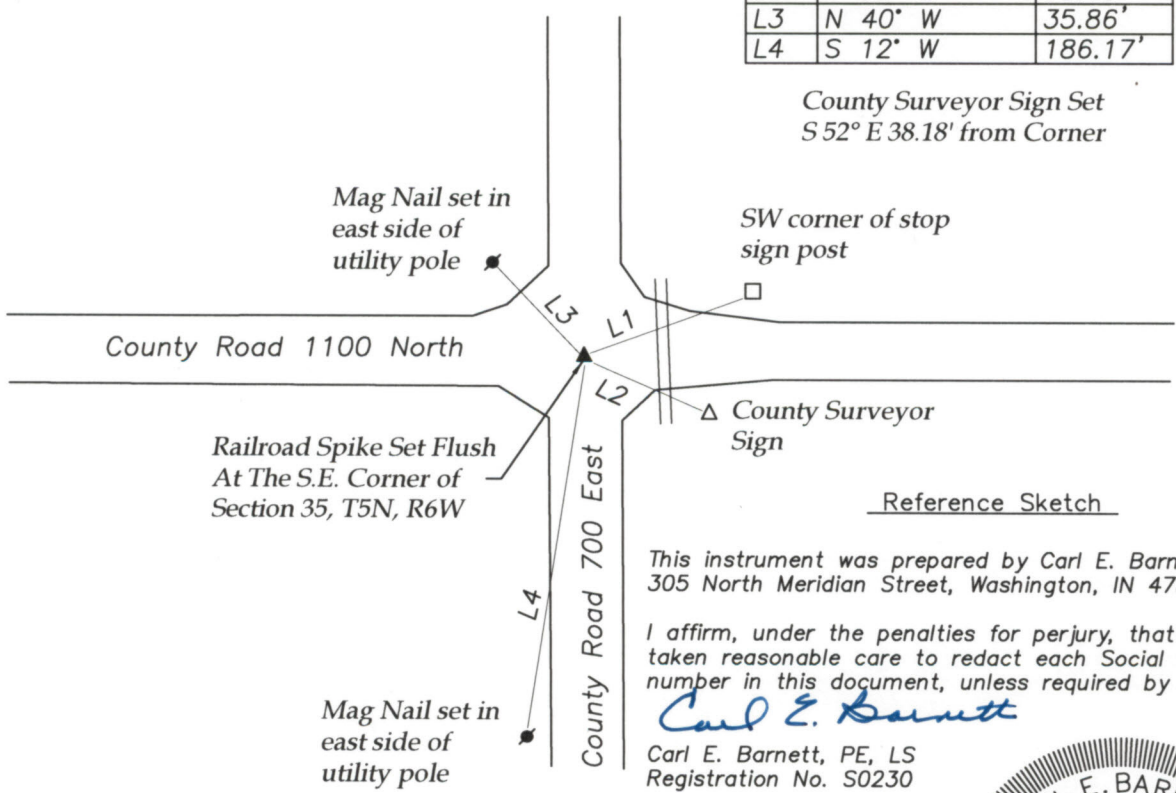
Remarks

The corner is a railroad spike set flush in place of a Mag Nail found buried 1". This monument was recovered during a survey performed by me on September 5, 2018 and recorded as Instrument NO. 18-3478.

S.E. Corner

| LINE | BEARING | DISTANCE |
|------|---------|----------|
| L1 | N 65° E | 32.07' |
| L2 | S 52° E | 38.18 |
| L3 | N 40° W | 35.86' |
| L4 | S 12° W | 186.17' |

County Surveyor Sign Set
 S 52° E 38.18' from Corner



Reference Sketch

This instrument was prepared by Carl E. Barnett, PE, LS, 305 North Meridian Street, Washington, IN 47501

I affirm, under the penalties for perjury, that I have taken reasonable care to redact each Social Security number in this document, unless required by law.

Carl E. Barnett

Carl E. Barnett, PE, LS
 Registration No. S0230

Prepared By:

Signature: *Carl E. Barnett*

Printed name: Carl E. Barnett

Indiana Land Surveyor Registration Number: S0230

Date: January 5, 2019



seal